

# Galerie Lelong & Co.



28 April - 1 May 2022

Tour & Taxis, Avenue du Port 86c, 1000 Brussels, Belgium

Booth A65



Etel Adnan, *Découverte de l'immédiat 8*, 2021, ink on canvas, 41 x 33 cm, W23456





Pierre Alechinsky, *Couvre-Feu*, 2020, acrylic on paper mounted on canvas, 172 x 262 cm, w22917





Leonardo Drew, *Number 246*, 2020, wood and paint, 140 x 162,5 x 30,5 cm, w22813





Günther Förg, Untitled, 1994, acrylic on paper, 198 x 147,5 cm, 30496





Frank Horvat, *Cinzia (a)*, 1983, archival pigment print, edition of 12, 120 x 80,4 cm, w22424





Samuel Levi Jones, *Controlled Bodies*, 2021, pulped and deconstructed books on canvas, 76 x 76 cm, w23842





Jaume Plensa, *Rose*, 2021, alabaster, 121 x 38 x 48 cm, w23916





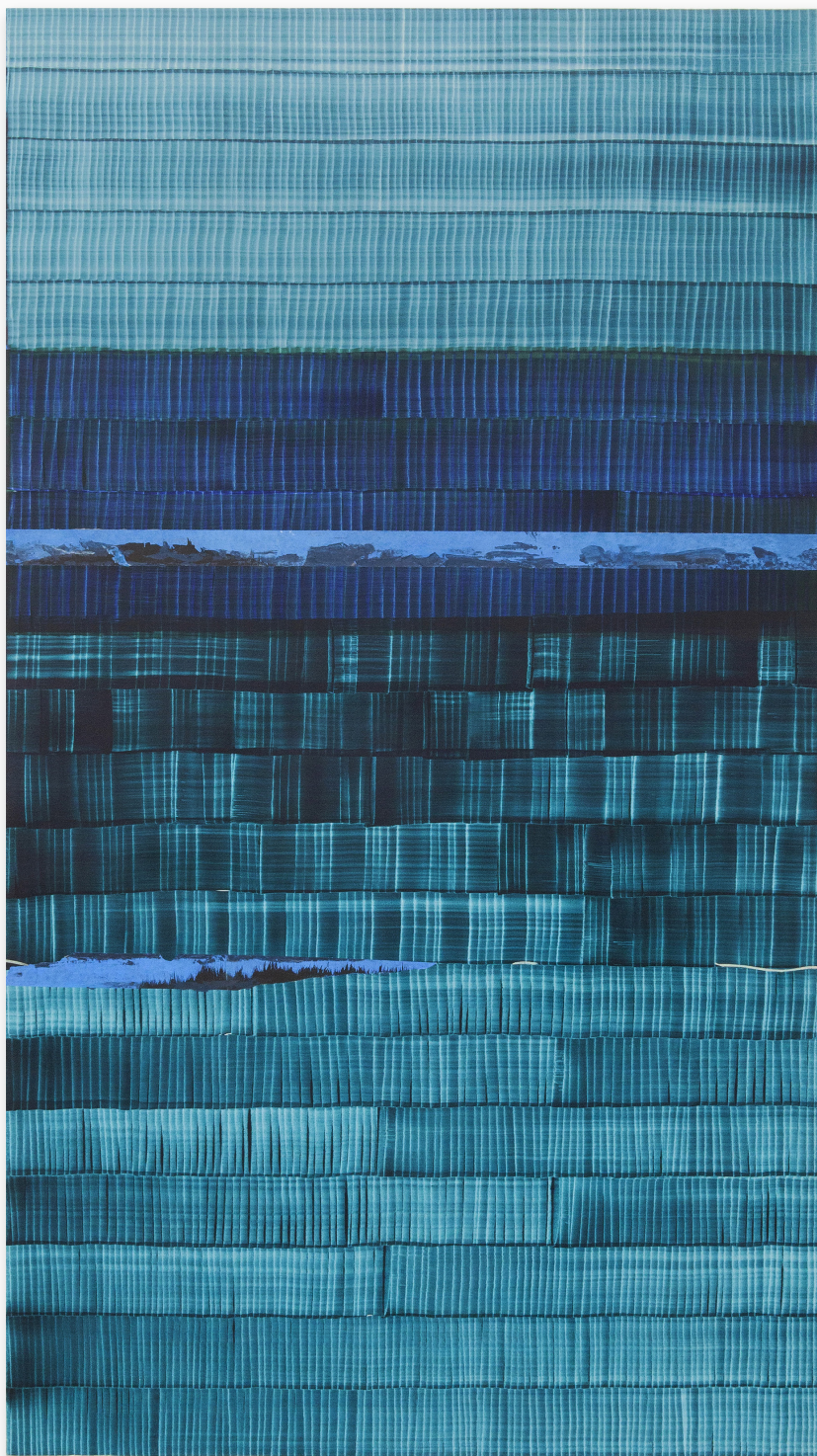
Kiki Smith, *Sun*, 2018, bronze and steel, 81,5 x 122 x 61 cm, w23321





Barthélémy Togo, *Le jugement dernier XIV*, 2012, watercolor on paper mounted on canvas, 108 x 200 cm, w16503





Juan Uslé, *Quintres (Quebrantas)*, 2021, vinyl, dispersion and dry pigment on canvas, 198 x 112 cm, w23848





Fabienne Verdier, *Carrière de Bibémus*, 2019, acrylic and mixed media on canvas, 90 x 226 cm, w23933





Jan Voss, *Tumult*, 2021, acrylic on canvas, 200 x 300 cm, w23332



# David Nash

## Recent sculptures and drawings

David Nash has been in a constant dialogue with trees for more than 50 years, not only those of his home region of North Wales, but also the trees of Japan, California, Portugal, and more. As sculptor he does not see wood as a simple material to source from a forest before executing a pre-existing idea. Rather, it is the trunk, the branches, the texture, even the roots, that inspire and suggest artistic possibilities which are then verified, invalidated, or transformed over the course of his work, chain saw or chisel in hand, without forgetting the use of fire.

Alongside his main activity of wood sculpting, over the last years David Nash has developed a body of work using pastels. In his drawings, he has succeeded in maintaining the main quality of his sculpture: its simplicity. He produces geometric or



David Nash in his studio, 2021

biomorphic shapes that are often in one single colour and which seem to be alive on the page.

David Nash (born in 1945 in Esher, England) lives and works in Blaenau Ffestiniog in North Wales. He has been a member of the Royal Academy since 1999. His work, widely represented in major museums in Europe, America, Australia and Japan, has been the subject of retrospectives at the Yorkshire Sculpture Park (2010), Kew Gardens (2012), Cardiff Museum (2019) in the United Kingdom and the Fernet-Branca Foundation in France (2018). In addition, he creates site-specific works in sculpture parks such as the Domaine de Chaumont-sur-Loire.





*Torso*, 2011, bronze, 196 x 94 x 61 cm, w19913





*Scales Egg*, 2022, maple, 53 x 34 x 34 cm, w23999





Zig Zag, 2021, beech, part-charred, 62 x 40 x 27 cm, w24000





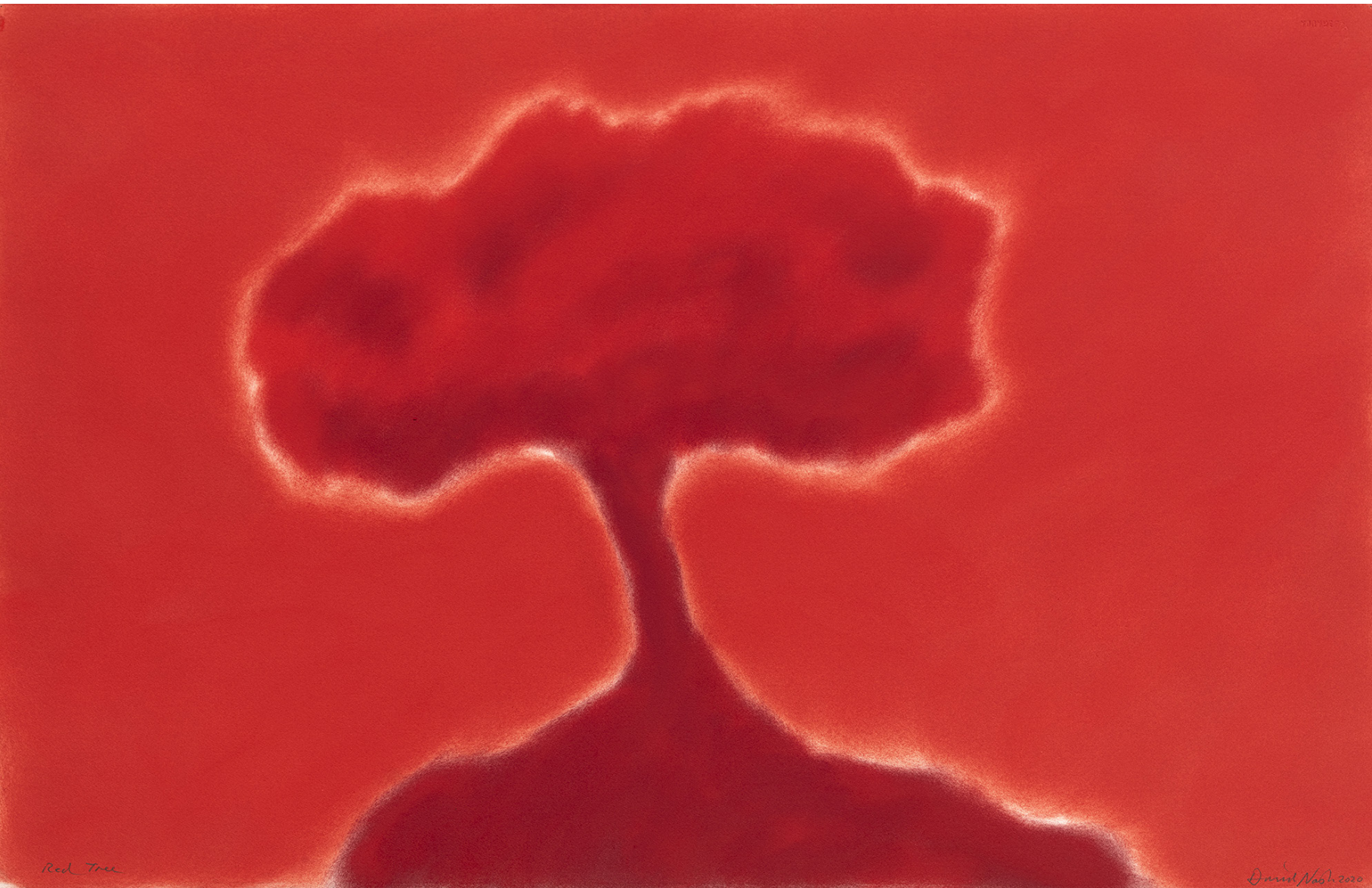
*Sliced Pyramid*, 2022, redwood, 66 x 30 x 26 cm, w24001





*Figure Column*, 2022, redwood, 77 x 39 x 50 cm, w24002





Red Tree, 2020, pigment on paper, 67 x 101 cm, 33679





Red Tree, 2021, pigment on paper, 102 x 110 cm, w23976





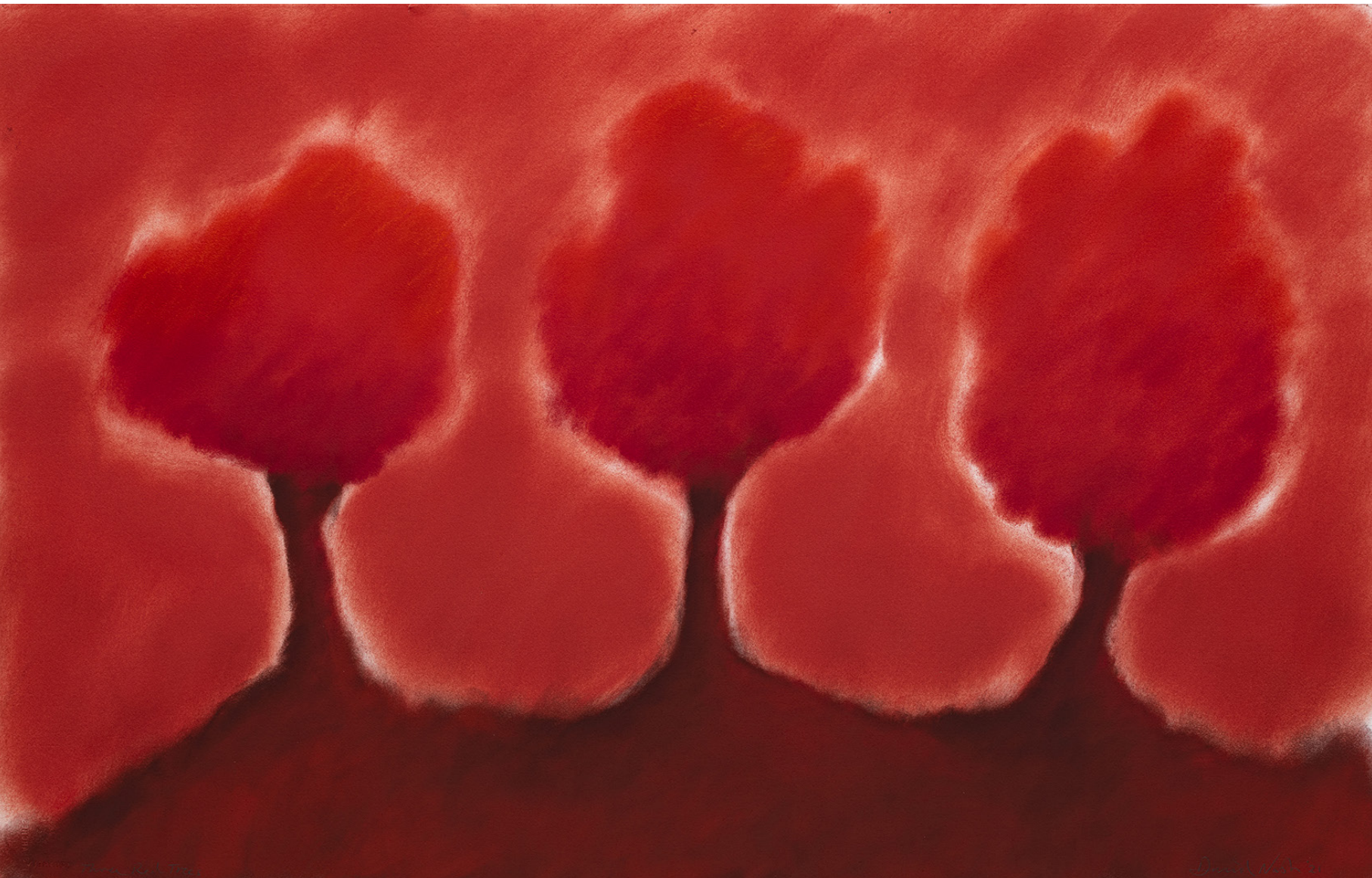
Red Tree, 2021, pigment on paper, 102 x 110 cm, w23977





Red Tree, 2021, pigment on paper, 102 x 110 cm, w23978





*Three Red Trees*, 2021, pigment on paper, 66,5 x 103,5 cm, w23980





Cherry - Kew, 2012, pigment on paper, 55,5 x 75,5 cm, w23993





Cherry - Kew, 2012, pigment on paper, 55,5 x 75,5 cm, w23994





Weeping Lime - Kew, Autumn, 2012, pigment on paper, 76 x 56 cm, w23995





*Weeping Lime* - Kew, Autumn, 2012, pigment on paper, 76 x 56 cm, w23996





*Weeping Lime - Kew, Autumn, 2012, pigment on paper, 76 x 56 cm, w23997*





*Weeping Lime* - Kew, Autumn, 2012, pigment on paper, 76 x 56 cm, w23998